

General Plan & Hawthorne Boulevard Specific Plan Update



CITY OF LAWDALE

Virtual Community Meeting

Community Development Department

02/03/2021



What is the General Plan?

- Serves as a Guiding document to achieve a communities vision for the future.
- It address all aspects for development, housing traffic, natural resources, open space, safety land use & public facilities.



7 Mandatory Elements

- Land Use
- Open Space
- Conservation
- Housing
- Circulation
- Noise
- Safety
- ENVIRONMENTAL JUSTICE
 - 8th Mandatory Element



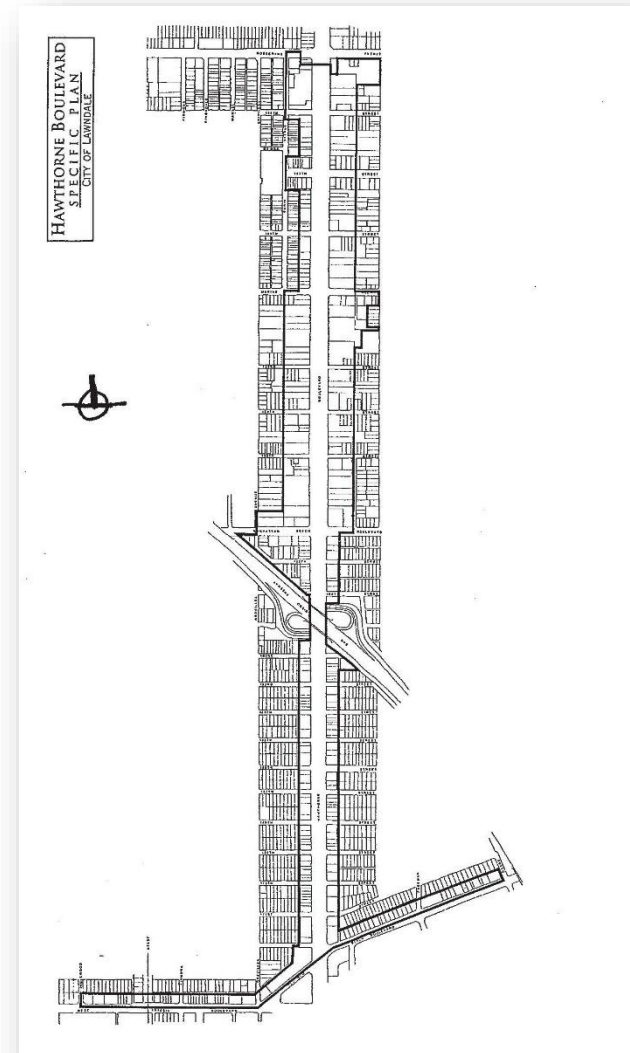
2 Optional Elements

- Economic Element
- Air Quality



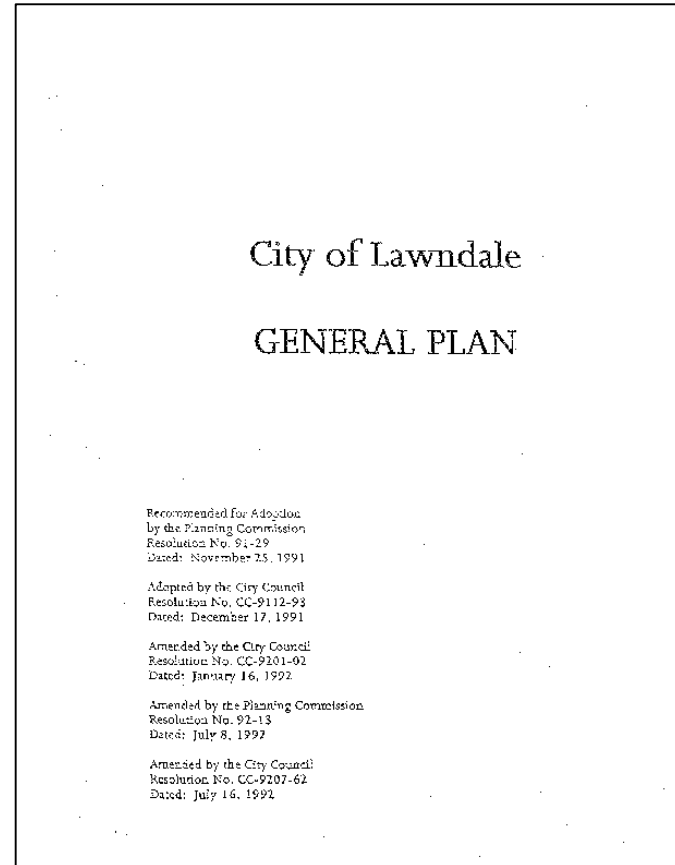
What is the Hawthorne Boulevard Specific Plan?

- A step below the General Plan
- Used to systematically implement the General Plan in a particular geographical area.
- More specific standards such as design, parking, landscaping are implemented.



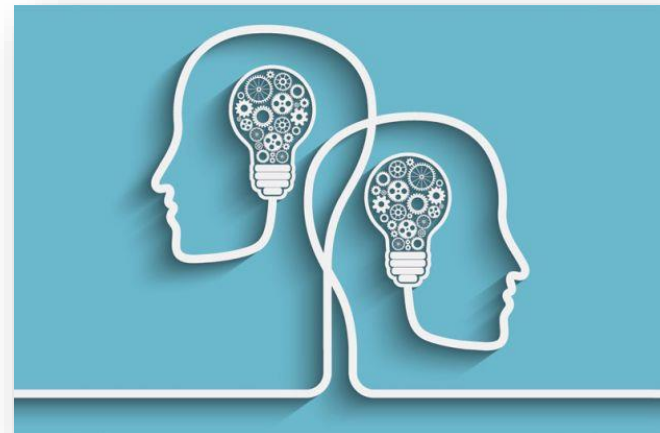
Background

- The city's General Plan was adopted by City Council on December 17, 1991.
- Last update was in 2016 (Safety Element).
- The HBSP was adopted with the General Plan and later was removed from the General Plan and adopted in 1999.
- HBSP major revision was on June 2009.



The Process

- a) Update the existing conditions report
- b) Evaluation of existing policies & programs
- c) Community outreach
- d) Hawthorne Boulevard Specific Plan
- e) Draft General Plan & Hawthorne Boulevard Specific Plan
- f) Draft & Final Environmental Impact Report
- g) Public hearings and adoption



Public Input

- Goals & Objectives for Land Use
 - Community design
 - Landscaping
 - Community Character
 - Land use patterns & Infrastructure
 - Public Health & Safety
 - Commercial uses
 - Industrial Uses
 - Open Space
 - Public facilities



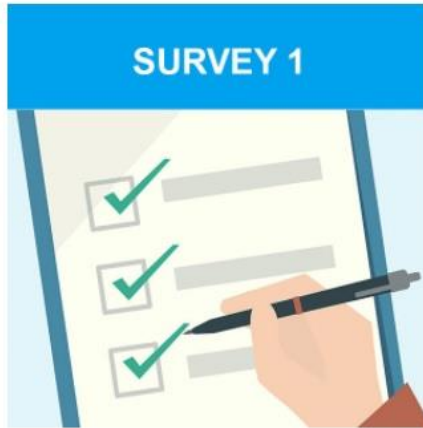


Topics to Consider

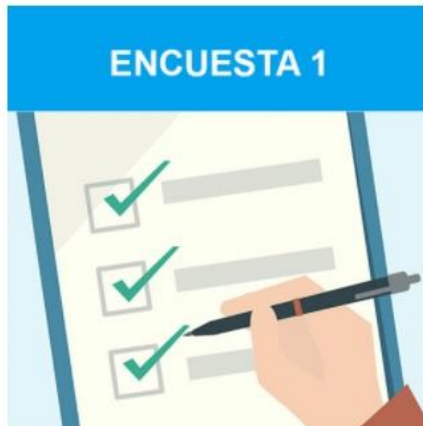
- What are the main issues in the City?
- What are uses that do not represent the values of the City?
- What type of development would you like to see more of?
- Are there any specific design characteristics you like or dislike?
- What type of housing do you think is needed?

Survey & Comments

Input in English

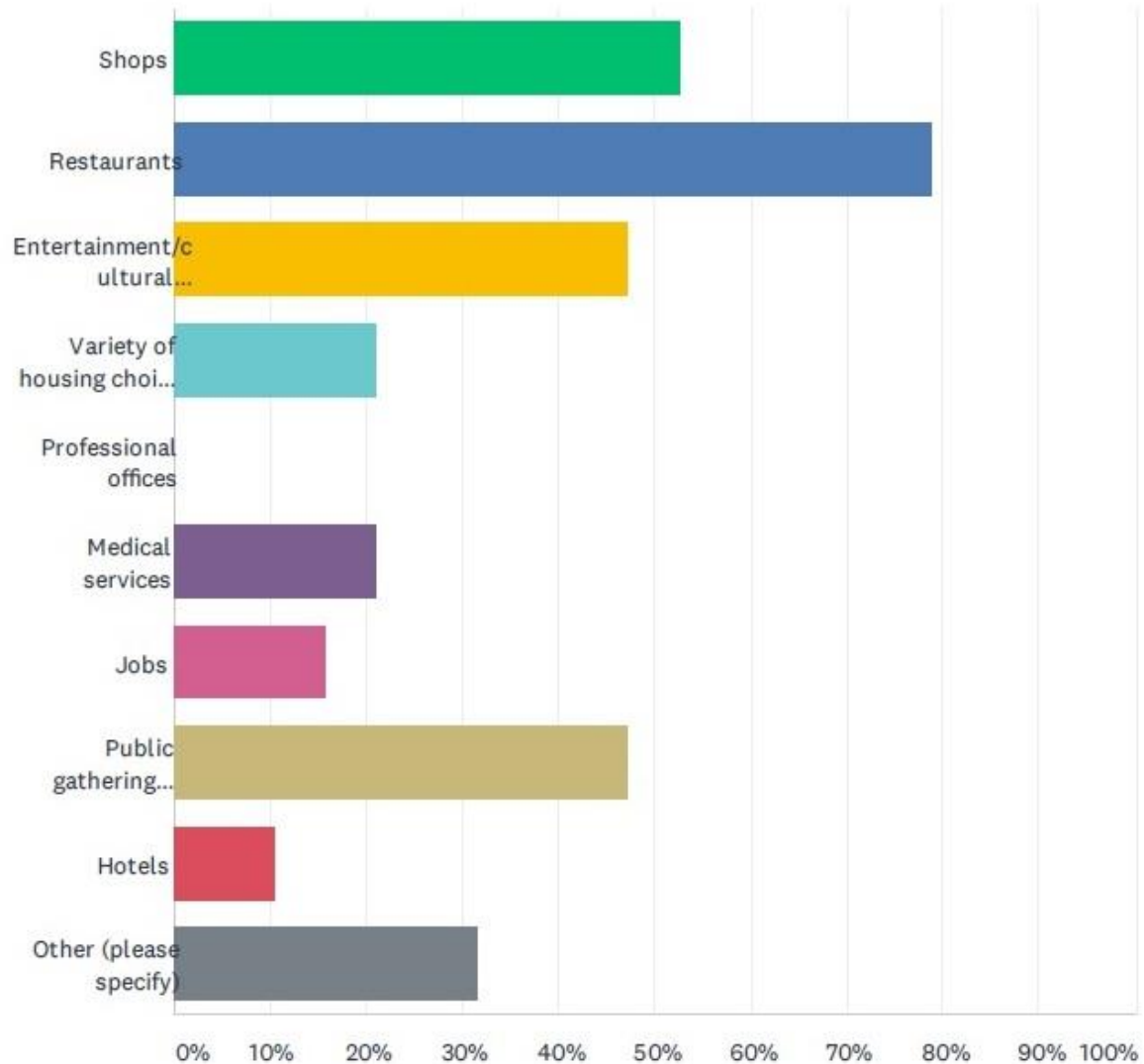


Entrada En Español



Q4 What would you like to see more of in Lawndale? (Pick up to five)

Answered: 19 Skipped: 1



Contact information

- Jared Chavez, Senior Planner
 - Jchavez@Lawndalecity.org
 - (310) 973 -3206
- Rafael Garcia, Associate Planner
 - RGarcia@Lawndalecity.org
 - (310) 973 -3240
- Community Development Department
 - <https://lawndale.generalplan.org/>
 - <https://www.lawndalecity.org/>
 - (310) 973 -3230

